

Accident & Emergency	INDICATOR	SITE	14/09/2014	21/09/2014	28/09/2014	05/10/2014	12/10/2014	19/10/2014	26/10/2014	02/11/2014	09/11/2014	16/11/2014	23/11/2014	30/11/2014	07/12/2014	14/12/2014	21/12/2014	28/12/2014	04/01/2015	TREND	WEEKLY TRAJECTORY	MTD	YTD
			All Types	QH		78.11%	84.82%	77.79%	74.66%	74.65%	71.67%	75.18%	77.08%	80.36%	75.60%	80.52%	87.66%	76.64%	68.18%	72.81%	71.67%	66.55%	↑
KGH		98.64%		96.79%	92.58%	90.83%	92.68%	89.77%	89.62%	86.06%	82.90%	83.30%	85.82%	88.49%	86.47%	79.57%	81.88%	88.52%	80.48%	↑		83.92%	90.74%
BHRUT		85.74%		89.77%	83.72%	81.50%	81.97%	79.14%	81.08%	80.80%	77.18%	78.73%	82.71%	88.00%	80.60%	72.93%	79.29%	78.32%	72.24%		89.80%		
Type 1	London		94.57%	94.60%	94.42%	94.20%	93.74%	92.64%	93.51%	93.13%	93.11%	92.94%	93.17%	92.87%	91.32%	89.73%	89.01%	91.24%	88.75%				
	QH		77.05%	84.23%	77.06%	73.50%	73.65%	70.60%	74.37%	76.25%	79.54%	74.46%	79.79%	87.57%	75.60%	66.84%	71.71%	71.10%	65.48%	↑		69.13%	78.08%
	KGH		97.99%	95.14%	92.15%	86.55%	89.24%	85.38%	84.96%	79.06%	74.48%	74.47%	78.13%	82.64%	78.12%	68.60%	72.68%	82.69%	69.59%	↑		75.32%	85.98%
	BHRUT		82.77%	87.81%	81.00%	77.98%	78.77%	75.49%	77.89%	77.18%	77.94%	74.46%	79.25%	86.01%	76.35%	67.40%	75.28%	74.38%	66.74%				
	London		91.26%	91.37%	91.07%	90.90%	89.86%	88.12%	89.62%	89.01%	88.89%	88.69%	89.03%	88.74%	86.21%	84.28%	81.98%	85.66%	81.71%				

1. Demand & Pre-hospital Care	WEEKLY INDICATORS	SITE	14/09/2014	21/09/2014	28/09/2014	05/10/2014	12/10/2014	19/10/2014	26/10/2014	02/11/2014	09/11/2014	16/11/2014	23/11/2014	30/11/2014	07/12/2014	14/12/2014	21/12/2014	28/12/2014	04/01/2015	TREND	YTD MEDIAN	TARGET	NOTES	
																								12 Month Rolling Avg
<b>A&amp;E Weekly Activity</b>																								
A&E All Types Attendances including PELC Walk in Centre	QH		2805	2905	2999	2826	2931	3085	3026	2915	3050	3151	3168	3168	3193	3080	3098	2753	2765	↑	2948	2921	Data Source: Trust B2 Report. RAG based on YTD Median	
	KGH		1949	2053	2007	2060	1995	2130	2091	2059	2000	2162	2221	2155	2150	2203	2246	1795	1911	↑	2055	1994		
	BHRUT		4754	4958	5006	4886	4926	5215	5117	4974	5050	5313	5389	5323	5343	5283	5344	4548	4676	↑	5006	4931		
UCC Attendances	QH		765	797	819	736	789	858	767	826	684	721	773	706	740	652	668	561	590	↓	788		Data Source: Trust PAG dashboard. RAG based on YTD Median	
	KGH - PELC		698	696	624	655	638	666	648	693	660	748	781	755	843	827	822	738	727	↓	696			
	BHRUT		1463	1493	1443	1391	1427	1524	1415	1519	1344	1469	1554	1461	1583	1479	1490	1299	1317	↓	1493			
<b>Ambulance Conveyances</b>																								
Number of ambulance conveyances	QH		818	805	856	817	874	888	929	877	911	951	933	909	957	859	903	879	839	↓	874		Data Source: Trust PAG dashboard. RAG based on YTD Median	
	KGH		257	290	294	318	326	310	333	326	313	334	366	290	307	328	368	292	356	↑	318			
	QH - Conveyed Directly to Urgent Care Centre		89	89	112	78	93	90	103	104	63	60	55	55	56	40	49	33	35	↓	102			
<b>NHS 111 Service - PELC covering BHR CCGs &amp; WF CCG</b>																								
Referral Destination - Ambulance Dispatches			10.9%	12.3%	12.2%	12.9%	11.6%	9.6%	13.5%	13.3%	12.4%	11.4%	9.8%	9.1%	9.3%	9.6%	10.2%	9.1%	10.5%	↑	10.5%		Data Source: NHSE Weekly Sitrep Report	
Referral Destination - Recommended to attend A&E			8.6%	8.0%	8.6%	9.0%	8.9%	8.6%	8.2%	8.5%	7.5%	9.0%	9.2%	9.1%	8.4%	9.0%	8.7%	7.1%	8.2%	↓	8.5%			
Referral Destination - Recommended to attend Primary Care			61.6%	60.0%	59.0%	57.5%	59.8%	60.6%	59.6%	59.9%	59.7%	59.8%	61.5%	61.5%	63.6%	62.4%	62.4%	64.0%	62.4%	↓	60.6%			
% calls answered within 60 seconds			98.3%	96.7%	98.8%	97.3%	98.6%	97.7%	95.1%	96.9%	97.1%	96.8%	94.7%	92.8%	91.3%	93.1%	92.4%	95.7%	96.4%	↑	96.4%	85%		
LONDON - % calls answered within 60 seconds			98.4%	98.8%	98.1%	98.0%	98.1%	95.7%	96.9%	96.0%	97.8%	97.3%	93.6%	91.7%	92.1%	88.5%	89.0%	85.6%	93.2%	↑	95.7%	95%	RAG is based on Winter Period	
<b>Community Treatment Team (CTT)</b>																								
Referrals received vs plan	Community Hub		143	164	140	130	163	175	199	189	195	199	218	198	214	195	233	166		↑	147	97	Data Source: Trust Weekly CTT Dashboard. RAG based on Local Target	
	Acute Hub		45	56	25	49	51	43	41	30	43	42	28	20	17	38	38	32		↑	46	32		
Referrals from LAS			17	22	13	20	31	22	24	21	18	29	20	19	12	10	22	22		↑	20		Data Source: Trust Weekly CTT Dashboard. RAG based on YTD Median	
Barking and Dagenham	Community Hub		33	40	41	33	36	43	49	47	50	61	59	61	68	46	64	47		↑	41	26	Data Source: Trust Weekly CTT Dashboard. RAG based on Local Target.	
	Acute Hub		6	10	5	8	16	11	8	9	7	6	4	1	5	7	6	6		↑	10	15		
Havering	Community Hub		83	91	86	73	98	96	115	112	109	95	110	103	107	122	112	86		↑	81	53	Data Source: Trust Weekly CTT Dashboard. RAG based on Local Target.	
	Acute Hub		30	37	17	36	21	28	26	13	28	18	15	11	27	24	22			↑	29	19		
Redbridge	Community Hub		24	30	12	23	29	36	34	30	33	42	49	33	38	27	53	30		↑	27	37	Data Source: Trust Weekly CTT Dashboard. RAG based on Local Target.	
	Acute Hub		7	6	2	2	12	2	2	4	4	3	3	3	0	3	7	2		↑	4	13		
<b>MONTHLY INDICATORS</b>																								
			Sep-14				Oct-14				Nov-14				Dec-14				TREND	YTD MEDIAN	TARGET	NOTES		
<b>Activity (YTD)</b>																								
A&E / UCC Attendances (excluding KGH Type 3 attendances)	BHR CCGs @ BHRUT Total		96,772				113,794				130,811								↑		130,863	Data Source: SLAM flex data		
	Barking & Dagenham CCG		30,356				35,862				41,224								↑		41,922			
	Havering CCG		40,131				46,947				53,936								↓		53,378			
	Redbridge CCG		26,285				30,985				35,651								↑		35,563			
<b>Ambulance Conveyances</b>																								
Blue Light Activity as a percentage of all ambulance conveyances	Queens		10.0%				12.0%				11.2%								↑	10.1%		Data Source: LAS		
	KGH		8.9%				8.6%				10.3%								↓	8.7%				
	London		10.3%				10.7%				11.4%								↓	9.8%				
<b>Surge Schemes</b>																								
Appointments Capacity	Barking and Dagenham		2882				2955												↓		3515	RAG Based on Local YTD Target		
Appointments Booked			2363				2423												↓			RAG in development		
Appointments Capacity	Havering		528				528												→		528	RAG Based on Local YTD Target		
Appointments Booked			323				390												↑			RAG in development		
<b>QUARTERLY INDICATORS</b>																								
			2014-15 QUARTER 2						2014-15 QUARTER 3						TREND	YTD MEDIAN	TARGET	NOTES						
<b>Ambulance Conveyances from BHR Residential and Nursing Homes</b>																								
LAS call outs from nursing homes within BHR CCGs	Actual		1192																		↓			Data Source: LAS
	% change from corresponding quarter in previous year		25.9%																					
LAS conveyances from nursing homes within BHR CCGs	Actual		1093																		↓			Trend compared to same quarter in previous year.
	% change from corresponding quarter in previous year		30.6%																					
<b>Ambulance Conveyances from Havering Residential and Nursing Homes</b>																								
Patients conveyed to ED via LAS	Actual		341																		↓			Data Source: LAS
	% change from corresponding quarter in previous year		16.0%																					

WEEKLY INDICATORS	SITE	14/09/2014	21/09/2014	28/09/2014	05/10/2014	12/10/2014	19/10/2014	26/10/2014	02/11/2014	09/11/2014	16/11/2014	23/11/2014	30/11/2014	07/12/2014	14/12/2014	21/12/2014	28/12/2014	04/01/2015	TREND	YTD MEDIAN	TARGET	NOTES			
		<b>Urgent Care Centre</b>																							
Queens UCC Utilisation	QH	42.9%	43.7%	42.9%	40.3%	42.0%	44.7%	39.2%	45.0%	33.0%	33.7%	37.0%	33.6%	34.6%	29.9%	31.7%	30.2%	32.1%	↓	42.0%	45% - 50%	Data Source: Trust PAG dashboard. RAG Based on Local Target			
KGH PELC UCC Utilisation	KGH	35.8%	33.9%	31.1%	31.8%	32.0%	31.3%	31.0%	33.7%	33.0%	34.6%	35.2%	35.0%	39.2%	37.5%	36.6%	41.1%	38.0%	↓	35.4%		Data Source: Trust B2 Report. RAG is based on the YTD Median			
<b>Activity</b>																									
																				YTD MEDIAN	TARGET				
Non-Elective Admissions	BHRUT	879	994	1005	994	984	958	980	962	979	973	987	1021	1017	958	966	1025	893				Data Source: Trust Daily Sitrep. RAG Based on YTD Median			
Attendance to admission ratio	QH	26.3%	28.8%	30.1%	28.5%	23.9%	23.6%	24.0%	24.5%	24.3%	22.5%	23.2%	24.2%	23.5%	22.9%	22.9%	28.5%	24.4%	↓	23.9%		Data Source: Trust PAG dashboard.			
	KGH	26.6%	28.3%	27.5%	30.1%	21.9%	20.9%	21.7%	24.1%	22.7%	22.1%	23.8%	24.9%	27.6%	25.5%	25.4%	30.2%	29.9%	↓	24.1%		RAG Based on YTD Median			
<b>Ambulance Handovers</b>																									
																				YTD MEDIAN	TARGET				
Within 15mins	QH	36.3%	35.6%	37.2%	42.6%	34.7%	33.5%	31.5%	38.6%	37.8%	28.4%	34.1%	38.1%	31.9%	31.4%	36.0%	21.0%	21.0%	↓	35.8%	100%	Data Source: HAS Portal RAG based on LAS Target			
	KGH	38.3%	42.4%	41.4%	37.9%	38.5%	33.2%	40.5%	30.9%	28.9%	31.0%	33.8%	39.1%	32.3%	32.1%	39.6%	31.6%	25.3%	↓	39.3%					
London	46.2%	45.3%	45.2%	46.7%	45.1%	42.1%	44.7%	43.1%	44.1%	44.0%	44.3%	44.6%	42.0%	37.3%	48.2%	38.1%	35.0%	↓	48.1%						
Within 30mins	QH	91.8%	91.7%	91.5%	86.7%	85.0%	85.9%	85.6%	89.4%	89.7%	76.2%	86.6%	93.0%	81.7%	75.1%	89.0%	69.0%	62.8%	↓	89.5%					
	KGH	96.7%	96.7%	97.2%	97.2%	95.8%	97.8%	94.4%	95.5%	90.5%	93.4%	92.3%	96.4%	96.5%	91.3%	95.9%	90.2%	87.9%	↓	96.5%					
London	94.1%	93.2%	92.9%	93.1%	92.2%	91.6%	92.4%	91.2%	91.8%	90.4%	91.7%	92.2%	90.1%	85.6%	95.2%	86.7%	82.6%	↓	94.2%						
<b>Assessment process &amp; specialty response</b>																									
																				YTD MEDIAN	TARGET				
Rapid Assessment & Treatment - Triaged < 30 mins	QH	59.4%	60.2%	51.6%	59.1%	53.3%	48.8%	58.0%	56.2%	57.2%	52.0%	56.4%	48.6%	45.5%	42.8%	45.6%	47.0%	49.4%	↓	56.2%	95%	Data Source: Trust PAG dashboard RAG based on Local Target			
	KGH	88.7%	87.5%	84.1%	80.2%	83.4%	77.6%	80.4%	79.5%	70.1%	72.1%	75.8%	75.8%	76.1%	74.4%	67.0%	80.6%	78.6%	↑	83.4%	95%				
Seen by specialty team < 30min of request	QH	10.0%	12.2%	11.0%	11.7%	11.8%	10.1%	10.8%	11.6%	13.0%	10.4%	12.0%	14.3%	10.9%	11.2%	12.0%	10.5%	10.9%	↑	12.2%	80%				
	KGH	26.6%	22.5%	26.7%	23.5%	21.2%	25.9%	23.3%	16.6%	22.0%	19.5%	19.9%	21.2%	25.2%	17.4%	20.9%	25.6%	20.9%	↓	25.1%	80%				
Referred to specialty team < 2hrs of registration	QH	41.2%	42.3%	40.0%	42.9%	40.0%	39.8%	42.0%	39.1%	45.5%	44.1%	46.2%	45.0%	41.0%	39.3%	41.7%	40.0%	42.1%	↑	41.8%	80%				
	KGH	56.2%	54.1%	48.8%	48.1%	47.5%	45.7%	51.0%	49.6%	48.1%	48.3%	48.9%	49.8%	49.0%	44.8%	49.0%	53.9%	40.2%	↑	49.5%	80%				
<b>Non-Elective Length of Stay</b>																									
																				YTD MEDIAN	TARGET				
Non-Elective Length of Stay (days)	QH	6.0	6.1	6.8	6.7	6.5	7.2	6.3	6.4	5.9	6.1	6.5	5.5	5.1	6.9	6.7	6.1	5.8	↓	6.2	4.45	Data Source: Trust PAG dashboard			
	KGH	5.4	5.0	5.4	4.5	5.3	4.6	5.2	4.6	6.9	4.4	4.9	6.7	6.0	5.1	4.5	5.0	5.6	↑	5.1	4.45	RAG based on Local Target			
<b>Longest Wait in ED</b>																									
Longest Wait (minutes)	QH	1335	1460	1263	1534	1529	1615	1669	1284	1270	1376	1375	1048	1308	1730	1469	1671	1636	↑	1346		RAG based on YTD Median			
	KGH	1002	882	1216	1101	1522	1350	1268	1492	1357	1330	1279	1083	1277	1571	1391	1218	1434	↑	1218		RAG based on YTD Median			
<b>MONTHLY INDICATORS</b>																									
MONTHLY INDICATORS	SITE	Sep-14					Oct-14					Nov-14					Dec-14					TREND	CUMULATIVE ACTIVITY APR 13 - NOV 13	YTD TARGET	NOTES
<b>Activity</b>																									
Elective Admissions (YTD) (all 12 NELCSU CCGs)		3,513					4,217					4,917										↑		4,608	
Non-Elective Admissions (YTD)	BHR CCGs @ BHRUT Total	21,921					25,651					29,331										↑	29,391	29,819	Data Source: SLAM flex data
	Barking & Dagenham CCG	6,305					7,352					8,393										↓	8,228	8,685	RAG based on Local Target
	Havering CCG	9,557					11,189					12,792										↓	12,088	12,516	Trend based on movement in % difference from contracted plan from the previous month.
	Redbridge CCG	6,059					7,110					8,146										↓	8,125	8,618	

2. Hospital Response

WEEKLY INDICATORS	SITE	14/09/2014	21/09/2014	28/09/2014	05/10/2014	12/10/2014	19/10/2014	26/10/2014	02/11/2014	09/11/2014	16/11/2014	23/11/2014	30/11/2014	07/12/2014	14/12/2014	21/12/2014	28/12/2014	04/01/2015	TREND	YTD MEDIAN	TARGET	NOTES	
		<b>DTOCs &amp; Discharges</b>																					
Delayed Transfers of Care		25	35	16	17	8	8	17	18	12	10	25	26	26	17	23	26	22	↑	24.5	20	Data Source: Trust Weekly DTOC Report RAG: Less than 20 Green, 21-39 Amber, 40+ Red	
<b>Discharge: Referral &amp; Assessment Process</b>																							
																				YTD MEDIAN	TARGET		
Referrals to Assessment (days)	Foxglove	0	0	0	0	0	0	0	0	0	0	0	0	0	0	0	0	0	0	→	0	<1	Data Source: NELFT Weekly Astralos Report RAG: Less than 1 day Green, Greater than 1 day Amber
	Heronwood & Galleon	0	0	0	0	0	0	0	0	0	0	0	0	0	0	0	0	0	0	→	0	<1	
	Gray's Court	0	0	0	0	0	0	0	0	0	0	0	0	0	0	0	0	0	0	→	0	<1	
	IRS	0	0	0	0	0	0	0	0	0	0	0	0	0	0	0	0	0	0	→	0	<1	
Assessment to Transfer (days)	Foxglove	1.25	0.75	0.4	0.2	1.6	0.78	1.33	1.11	1	0.67	1.13	0.83	1.38	1	0.44	1.5	2.5	↓	1.11	<2	Data Source: NELFT Weekly Astralos Report RAG: Between 0-2 days Green, between 2-3 days Amber and greater than 3 days Red	
	Heronwood & Galleon	1.43	1.33	1.83	1.75	0.67	0.56	1.14	2	0.50	2.50	0.88	1.6	1.5	1.5	0.5	1.67	0	↑	1.50	<2		
	Gray's Court	0.67	1	2.5	0.63	1	0.63	0.44	1.5	1.00	0.67	0.50	0.92	2	2	1.25	0.9	6	↓	1.38	<2		
	IRS	0	0	0	0	0	0	0	0	0	0	0	0	0	0	0	0	0	0	→	0		<2
<b>BHR Intensive Rehab Service</b>																							
																				YTD MEDIAN	TARGET		
New Referrals		22	15	31	18	32	24	24	34	34	52	34	38	40	36	42	10	26	↑	26.5	16	Data Source: Trust Weekly IRS Dashboard RAG Based on Local Target	
% Stepdown from Acute Beds		68%	60%	55%	67%	50%	63%	54%	62%	85%	77%	72%	87%	73%	78%	69%	89%	77%	↓	72%		Data Source: Trust Weekly IRS Dashboard RAG Based on YTD Median	
New Referrals	Barking & Dagenham CCG	4	4	6	2	5	9	9	7	8	14	11	7	13	13	8	1	5	↑	6	4	Data Source: Trust Weekly IRS Dashboard RAG Based on Local Target	
	Havering CCG	14	7	14	9	23	11	6	14	13	26	12	23	15	16	25	7	15	↑	11	7		
	Redbridge CCG	4	4	11	7	4	4	9	13	13	12	11	8	12	7	9	2	6	↑	7	5		
% Stepdown from Acute Beds	Barking & Dagenham CCG	100%	50%	83%	50%	40%	56%	56%	71%	100%	71%	82%	100%	77%	77%	88%	0%	80%	↑	77%		Data Source: Trust Weekly IRS Dashboard RAG Based on YTD Median	
	Havering CCG	50%	57%	43%	44%	48%	64%	67%	57%	69%	77%	57%	96%	67%	81%	64%	86%	80%	↓	75%			
	Redbridge CCG	100%	75%	55%	100%	75%	75%	44%	62%	92%	83%	82%	50%	75%	71%	67%	100%	67%	↓	73%			
<b>3. Getting People Home</b>																							
WEEKLY INDICATORS	SITE	14/09/2014	21/09/2014	28/09/2014	05/10/2014	12/10/2014	19/10/2014	26/10/2014	02/11/2014	09/11/2014	16/11/2014	23/11/2014	30/11/2014	07/12/2014	14/12/2014	21/12/2014	28/12/2014	04/01/2015	TREND	YTD MEDIAN	TARGET	NOTES	
<b>7 day working: Elective and Non-Elective discharges (medical and surgical)</b>																							
																				OCTOBER 2013 BASELINE			
Monday	Number of discharges	390	423	501	533	554	536	531	539	520	539	546	522	736	893	996	872	841	↑	598	15.7%	Each week's data is a total of the last 4 week period Data Source: Trust B2 report. Trend based on October baseline position.	
	% of discharges	11.4%	12.0%	13.6%	14.1%	14.5%	14.1%	14.2%	14.4%	13.8%	14.3%	14.3%	13.5%	15.3%	15.5%	16.9%	17.9%	18.2%					
Tuesday	Number of discharges	563	581	621	623	629	637	629	624	621	619	614	633	785	937	954	794	770	↑	612	16.1%		
	% of discharges	16.5%	16.5%	16.8%	16.4%	16.5%	16.8%	16.8%	16.6%	16.5%	16.5%	16.1%	16.4%	16.4%	16.3%	16.2%	16.3%	16.6%					
Wednesday	Number of discharges	583	614	665	668	684	651	601	593	623	642	650	665	791	928	933	768	828	↑	622	16.4%		
	% of discharges	17.1%	17.4%	18.0%	17.6%	18.0%	17.2%	16.1%	15.8%	16.5%	17.1%	17.1%	17.2%	16.5%	16.1%	15.9%	15.8%	17.9%					
Thursday	Number of discharges	536	561	552	573	570	573	602	614	653	634	657	666	781	957	948	776	652	↓	646	17.0%		
	% of discharges	15.7%	15.9%	15.0%	15.1%	15.0%	15.1%	16.1%	16.4%	17.3%	16.9%	17.3%	17.2%	16.3%	16.6%	16.1%	16.0%	14.1%					
Friday	Number of discharges	655	656	664	680	687	697	702	704	676	652	634	651	842	979	1001	808	710	↓	645	17.0%		
	% of discharges	19.2%	18.6%	18.0%	17.9%	18.0%	18.4%	18.8%	18.8%	17.9%	17.3%	16.7%	16.8%	17.6%	17.0%	17.0%	16.6%	15.3%					
Saturday	Number of discharges	374	385	389	389	381	392	375	392	391	401	406	419	505	590	592	467	444	↓	402	10.6%		
	% of discharges	11.0%	10.9%	10.5%	10.3%	10.0%	10.3%	10.0%	10.5%	10.4%	10.7%	10.7%	10.8%	10.5%	10.3%	10.1%	9.6%	9.6%					
Sunday	Number of discharges	314	308	296	327	305	306	294	283	285	273	298	314	355	467	459	373	386	↑	275	7.2%		
	% of discharges	9.2%	8.7%	8.0%	8.6%	8.0%	8.1%	7.9%	7.5%	7.6%	7.3%	7.8%	8.1%	7.4%	8.1%	7.8%	7.7%	8.3%					
Total	Number of discharges	3415	3528	3688	3793	3810	3792	3734	3749	3769	3760	3805	3870	4795	5751	5883	4858	4631	↓	3800			

Indicator	Site	Apr-14	May-14	Jun-14	Jul-14	Aug-14	Sep-14	Oct-14	Nov-14	Dec-14	Jan-15	Feb-15	Mar-15	Target	Notes	
<b>Prime Minister's Challenge Fund - Access Hubs</b>																
Primary Care	Barking & Dagenham	Total no. of appointments commissioned (Planned)													13,645	Barking and Dagenham due to open November 2014
		Total no. of Patients Seen (Actual)														
		% of appointments utilised														
		No. of DNA's														
		Source of referral (%)														
		111														
		A&E														
		UCC														
		WIC														
		Practice														
Primary Care	Havering	Total no. of appointments commissioned (Planned)													17,085	Activity to be reviewed and adjusted each month, according to demand. Maximum number of appointment contracted, 17,085
		Total no. of Patients Seen (Actual)														
		% of appointments utilised														
		No. of DNA's														
		Source of referral (%)														
		111														
		A&E														
		UCC														
		WIC														
		Practice														
		Other														
Primary Care	Redbridge	Total no. of appointments commissioned (Planned)													19,270	Activity to be reviewed and adjusted each month according to demand. Maximum number of appointment contract, 19,270.
		Total no. of Patients Seen (Actual)														
		% of appointments utilised														
		No. of DNA's														
		Source of referral (%)														
		111														
		A&E														
		UCC														
		WIC														
		Practice														
		Other														

Indicator	Site	Apr-14	May-14	Jun-14	Jul-14	Aug-14	Sep-14	Oct-14	Nov-14	Dec-14	Jan-15	Feb-15	Mar-15	TARGET	Notes
<b>A&amp;E / UCC Attendances</b>															
Age 65-74	QH	471	447	442	444	454	416	428	375						
	KGH	202	238	228	189	213	190	223	214						
	BHRUT	<b>673</b>	<b>685</b>	<b>670</b>	<b>633</b>	<b>667</b>	<b>606</b>	<b>651</b>	<b>589</b>						
Age 75+	QH	627	699	631	660	645	619	595	596						
	KGH	302	315	340	307	324	290	273	314						
	BHRUT	<b>929</b>	<b>1014</b>	<b>971</b>	<b>967</b>	<b>969</b>	<b>909</b>	<b>868</b>	<b>910</b>						
Age 85+	QH	553	520	519	484	502	484	525	539						
	KGH	192	234	195	233	235	192	162	22						
	BHRUT	<b>745</b>	<b>754</b>	<b>714</b>	<b>717</b>	<b>737</b>	<b>676</b>	<b>687</b>	<b>762</b>						
<b>Non-Elective Admissions by Average Length of Stay</b>															
Medical/Elderly	Non-Elective Admissions/Emergency Short Stay	QH	86	73	74	87	73	86	74	79					
		KGH	23	36	33	32	31	39	26	36					
		BHRUT	<b>109</b>	<b>109</b>	<b>107</b>	<b>119</b>	<b>104</b>	<b>125</b>	<b>100</b>	<b>115</b>					
	Non-Elective Emergency	QH	6326	6032	5697	5860	5230	4937	5906	5356					
		KGH	3391	2987	2666	2459	2498	2959	2664	2984					
		BHRUT	<b>9717</b>	<b>9019</b>	<b>8363</b>	<b>8319</b>	<b>7728</b>	<b>7896</b>	<b>8570</b>	<b>8340</b>					
Surgical	Non-Elective Admissions/Emergency Short Stay	QH	6	8	10	11	11	12	7	13					
		KGH	41	25	22	37	25	22	20	30					
		BHRUT	<b>47</b>	<b>33</b>	<b>32</b>	<b>48</b>	<b>36</b>	<b>34</b>	<b>27</b>	<b>43</b>					
	Non-Elective Emergency	QH	752	790	970	658	841	984	1273	730					
		KGH	1078	1198	1224	1189	1193	944	1090	936					
		BHRUT	<b>1830</b>	<b>1988</b>	<b>2194</b>	<b>1847</b>	<b>2034</b>	<b>1928</b>	<b>2363</b>	<b>1666</b>					



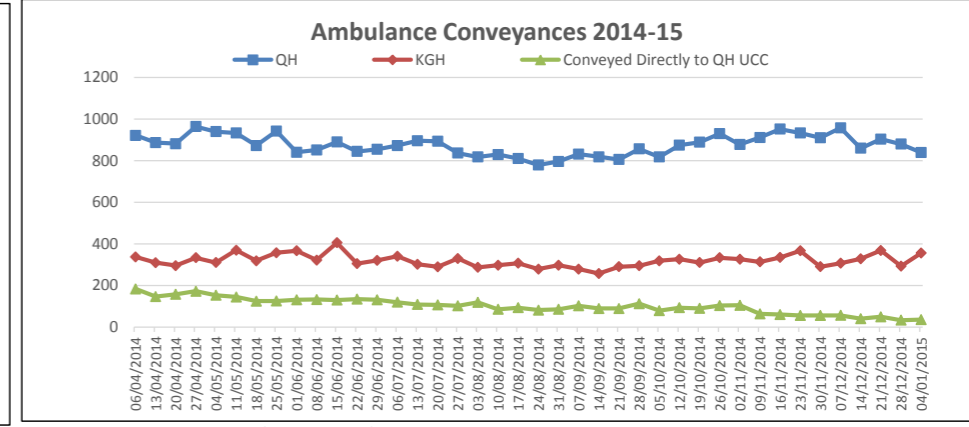
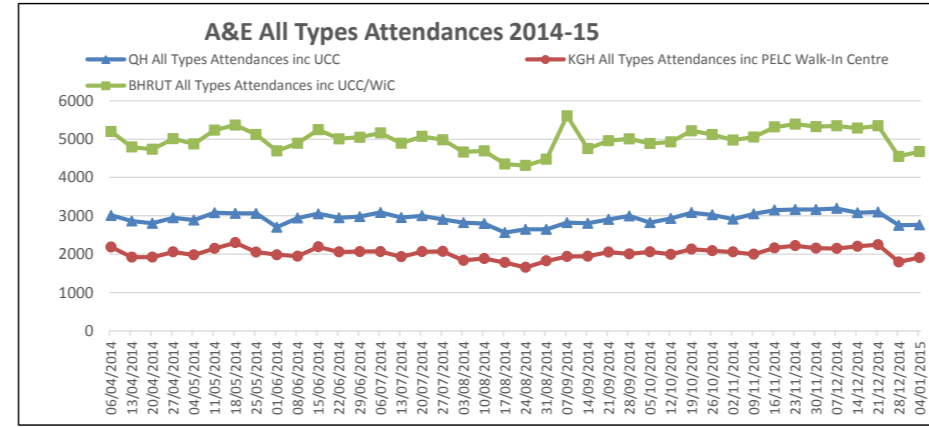
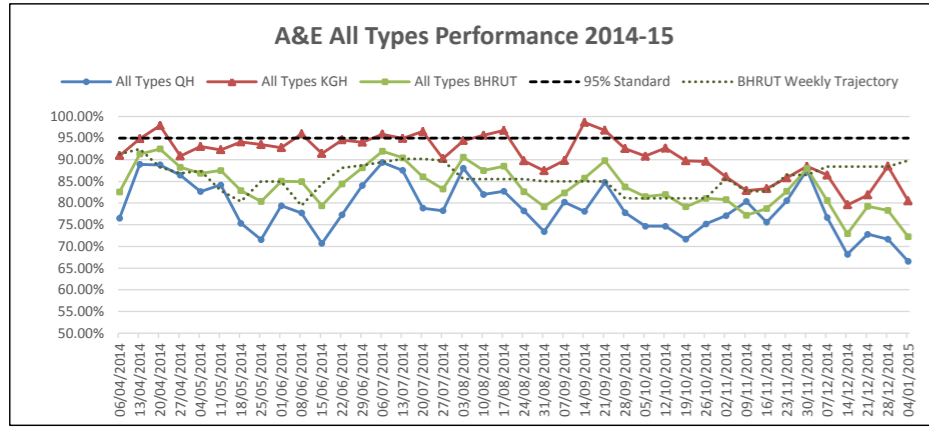
# URGENT CARE EXECUTIVE DASHBOARD SUMMARY

Report Production Date: 15/01/2015

RAG Status: ████████

RAG Status: ███ QH ███ KGH ███ BHRUT

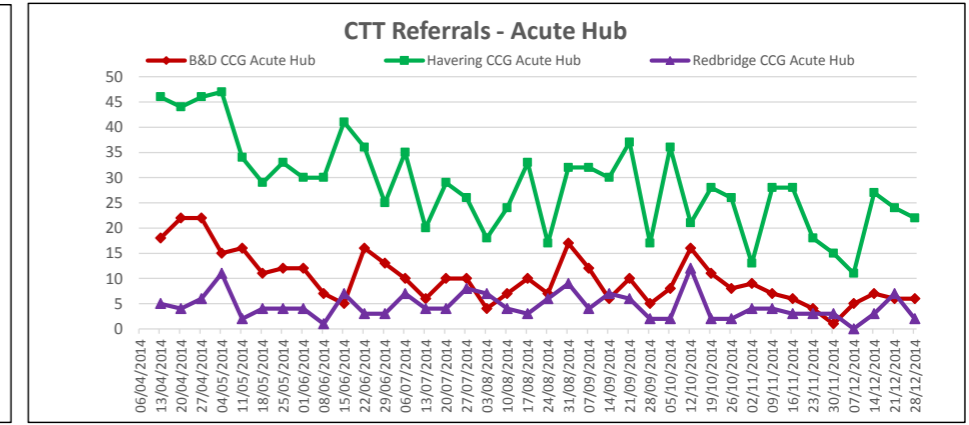
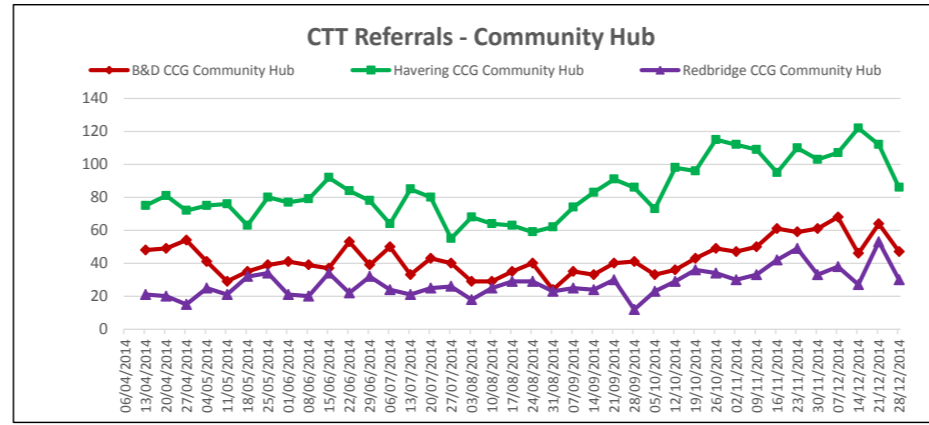
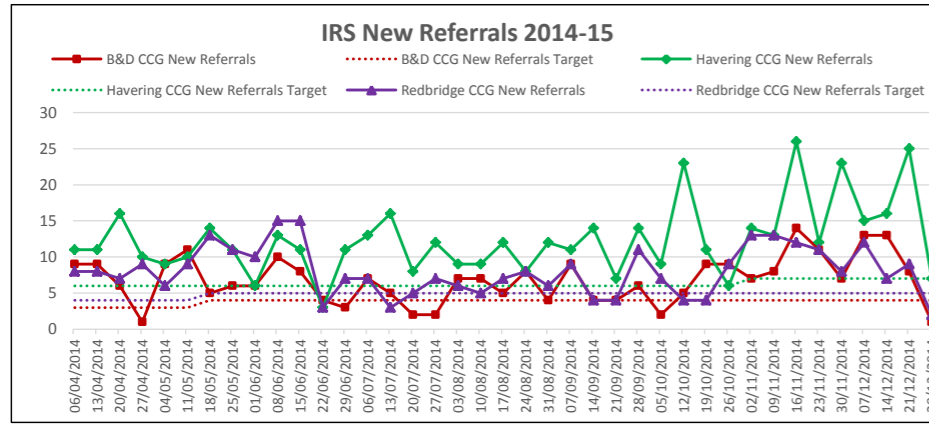
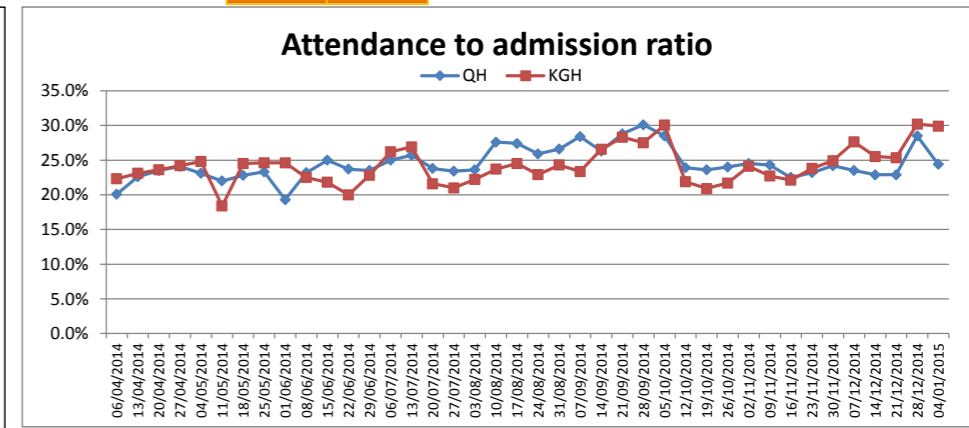
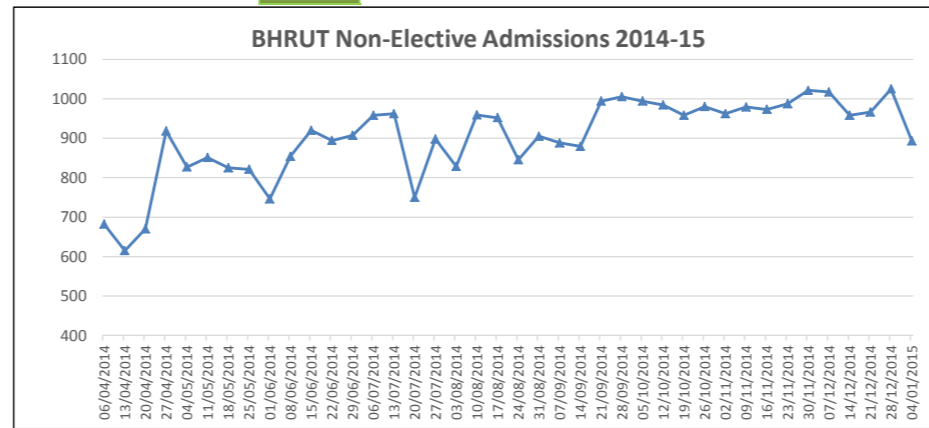
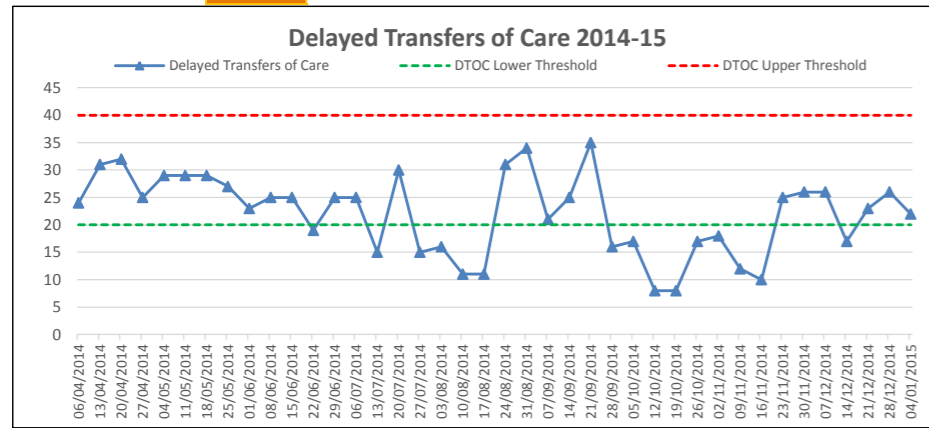
RAG Status: ███ QH ███ KGH ███ BHRUT



RAG Status: ████████

RAG Status: ████████

RAG Status: ███ QH ███ KGH



## Barking & Dagenham

Indicator	Current Month	Previous Month	YTD Median	Target	Trend
Current Month:		Nov-14			
A&E / UCC Attendances	5362	5506	5270	5154	↑
Non-Elective Admissions	1041	1047	1050	1067	↑
Current Month:		Nov-14			
IRS New Referrals	40	25	25	16	↑
CTT - Community Hub	217	161	164	104	↑
CTT - Acute Hub	26	43	42	60	↓

## Havering

Indicator	Current Month	Previous Month	YTD Median	Target	Trend
Current Month:		Nov-14			
A&E / UCC Attendances	6989	6816	6808	6563	↓
Non-Elective Admissions	1603	1632	1591	1539	↑
Current Month:		Nov-14			
IRS New Referrals	65	49	49	28	↑
CTT - Community Hub	426	382	334	212	↑
CTT - Acute Hub	87	111	120	76	↓

## Redbridge

Indicator	Current Month	Previous Month	YTD Median	Target	Trend
Current Month:		Nov-14			
A&E / UCC Attendances	4666	4700	4537	4373	↑
Non-Elective Admissions	1036	1051	1037	1060	↑
Current Month:		Nov-14			
IRS New Referrals	49	24	32	20	↑
CTT - Community Hub	154	122	115	158	↑
CTT - Acute Hub	14	18	19	52	↓